

DataSlave™

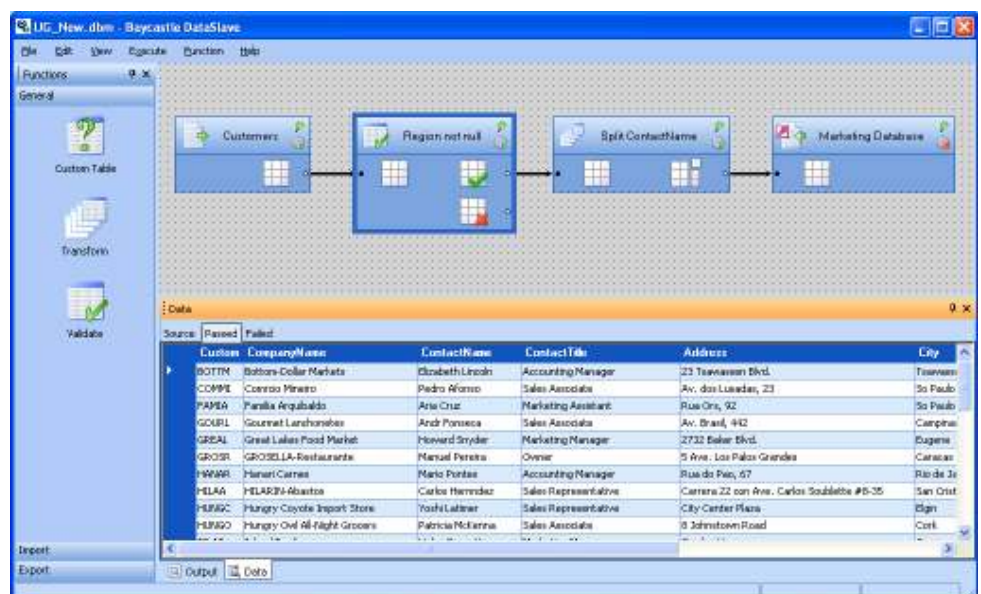
A graphical data transfer management tool

Features:

- Fast, safe and simple to use
- ♦ Drag and drop data management
- Review your data as you manipulate it
- Over 100 data validation checks
- Extensible with regular expressions and VBScript
- De-duplicate your data
- DataSlave Services - we help you build data validation to meet your unique requirements

- ♦ Do you need to move data from one database to another?
- ♦ Do you want to validate and clean key information?
- ♦ Do you want to export data to send to customers?
- ♦ Are you fed up with duplicate records?

DataSlave is a powerful tool for moving data in and out of databases. DataSlave supports many common data forms and will quickly and simply move, validate and cleanse your valuable data. This difficult task is now available to users without the need for any programming skills.

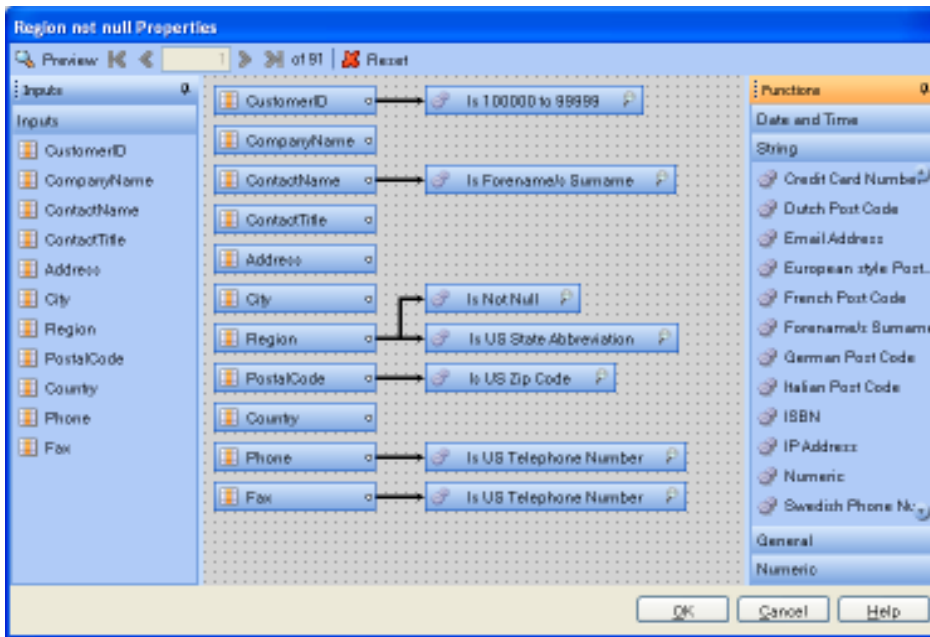


Download a trial version today.



Validation is as simple as picking the rule and dragging the data field you want to test onto the rule. What could be simpler?

There are more than 100 checks including many national postal codes, telephone numbers, US SSN, UK NI number, ISBN numbers and many more.



Map the data fields onto your marketing or customer database, modify as necessary and the job is done.

For example addresses and names can be split or joined with simple to use transformation functions



About Baycastle: Baycastle Software Ltd uses the latest Microsoft technology combined with our considerable experience to build 1st class software for real businesses. Baycastle tools are simple to use and give our customers access to levels of productivity never seen before.

Benefits:

- Clean up your data and improve the quality of your marketing
- Quickly import lists for new marketing campaigns
- Save money on marketing by removing duplicates
- Check your customer services database. Improve service quality
- Carry out data cleansing tasks without the need to hire expert staff
- Save your time to carry out key business tasks
- Avoid the cost and inaccuracies of re-keying business data