

NetProxy

secure, reliable, Internet access

Features:

- Fast, secure and affordable
 - ♦ Simple set-up
 - Powerful caching capability
 - User and group level access control & logging
 - DHCP built in for simple client set-up
 - Secure rules-based firewall
 - Central control of Internet access including barring "nasty" sites
- ♦ Are you concerned about the sites your staff can access from the Internet? Do you know who is responsible if your staff visit "nasty" sites?
 - ♦ Are you keen to close down Internet access in the evening?
 - ♦ Do you want to measure Internet access by users?
 - ♦ Are you concerned about Internet security?

Ease of use is a key element of NetProxy. NetProxy's unique configuration wizard means you simply need to enter a few basic details about your Internet Service Provider and a working (and, perhaps more importantly, a secure) setup will be created for you automatically. All you then need to do is tell your networked computers to "obtain an IP address automatically" and you're in business!

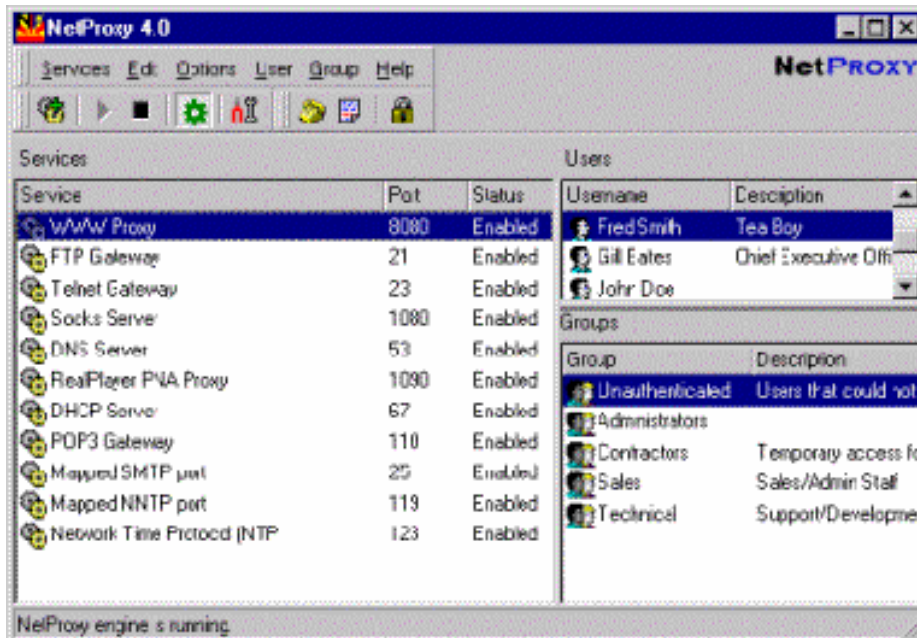
A comprehensive context-sensitive help system is included with NetProxy. This contains full details of every configuration option available, so fine-tuning and enhancing your setup couldn't be simpler.

NetProxy is available as a fully-functioning 30 day evaluation version **now**. After the evaluation period has expired, NetProxy will continue to run with support for one user at a time - you can carry on using it in this mode indefinitely, completely free of charge or purchase a multi-user copy!

Despite its simple to use front-end, NetProxy has an extremely powerful multi-protocol proxy engine and a flexible rules-based firewall system.

Download a trial version today.





Benefits:

- Powerful caching facility ensures that the available bandwidth is used effectively and reduces time spent online
- NetProxy supports the new HTTP/1.1 standard which brings faster web page access, less local network traffic and improved compatibility with new features offered by the latest web sites and browsers
- Full access logging for all network activity
- Greatly reduces the complexity of configuring your network and ensures that the correct TCP/IP settings are assigned

NetProxy runs under any of the following operating systems:-

- Windows XP
- Windows Me
- Windows 2000
- Windows NT 4 Server (service pack 6a or above)
- Windows NT 4 Workstation (service pack 6a or above)
- Windows 98
- Windows 95
- Windows Terminal Server

The minimum requirements for a PC running NetProxy are:-

- 133MHz Pentium PC, with at least 32MB of RAM running Windows 95
- An existing Internet connection (such as a dialup modem, ISDN, cable-modem or leased-line connection)

NetProxy is brought to you by a joint marketing arrangement with Grok Developments

About Baycastle: Baycastle Software Ltd uses the latest Microsoft technology combined with our considerable experience to build 1st class software for real businesses. Baycastle tools are simple to use and give our customers access to levels of productivity never seen before.