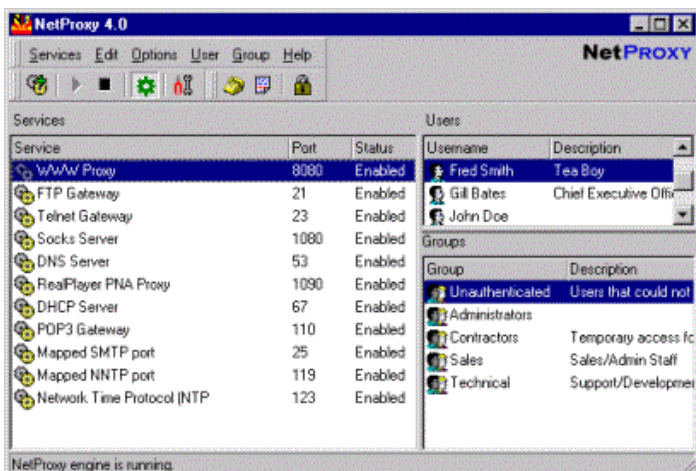


Ease of use is a key element of NetProxy. NetProxy's unique configuration wizard means you simply need to enter a few basic details about your Internet Service Provider and a working (and, perhaps more importantly, a secure) setup will be created for you automatically.



All you then need to do is tell your networked computers to "obtain an IP address automatically" and you're in business!

Despite its simple to use front-end, NetProxy has an extremely powerful multi-protocol proxy engine and a flexible rules-based firewall system.

Some of the main features are listed in the table below:

<p>Caching WWW Proxy</p>	<p>NetProxy's WWW proxy service includes a powerful caching facility that is optimized for dial-up use. This ensures that the available bandwidth is used effectively and reduces time spent online. New in version 4.0 is the ability to specify individual pages or web sites to exclude from the cache.</p>
<p>Support for HTTP/1.1</p>	<p>NetProxy 4.0 has a new WWW Proxy Engine, which adds support for the new HTTP 1.1 standard. The persistent-connection capability of HTTP/1.1 brings faster web page access, less local network traffic and improved compatibility with new features offered by the latest web sites and browsers. Be sure to turn on the "<i>Use HTTP/1.1</i>" and "<i>Use HTTP/1.1 through proxy connections</i>" options of your client web browsers to take advantage of this feature.</p>
<p>User and Group-level Access Control and Logging.</p>	<p>Create password-protected accounts for your proxy users to ensure the appropriate access is granted. The individual services each user or group of users has access to can be specified, along with the times of day and days of week they have access. NetProxy will also log the appropriate username against all transactions, tracing or monitoring Internet usage couldn't be easier!</p> <p>In addition to our own NetProxy Authentication Client, which is a standalone program that runs on Windows systems, NetProxy 4.00 supports standard WWW Proxy Authentication (implemented by popular web browsers on all platforms) and SOCKS v5 username/password authentication. Users can change their own passwords via a new "newpass" command in NetProxy's Telnet gateway.</p>
<p>Bind Services to Specific Network Interfaces .</p>	<p>This feature provides increased security by allowing you to bind NetProxy's services to the IP address assigned to your local network card (192.168.0.1 for example). Incoming connections from the outside world, which arrive at the external (dialup or ADSL) interface, will then be blocked at the operating system level, before they've even reached NetProxy's firewall!</p>
<p>FTP Gateway</p>	<p>Allows the use of standard FTP client software such as WS FTP and CuteFTP, and command-line FTP clients. NetProxy employs the popular 'user@hostname' method of firewall traversal.</p>
<p>Telnet Gateway</p>	<p>NetProxy has a particularly flexible Telnet gateway. In addition to supporting telnet to any port, it also supports the "finger" protocol and provides password-protected remote access to a number of useful</p>

	commands such as "netstat" and "listusers".
SOCKS Server	SOCKS is an industry standard firewall traversal protocol. NetProxy provides transparent support for versions 4, 4a and 5 of the SOCKS protocol. Full support for the SOCKS v5 username/password authentication scheme is provided.
RealPlayer Proxy	Support for a variety of streaming multimedia protocols from RealNetworks, Inc. Including RealAudio, RealVideo and RealFlash via NetProxy's RealPlayer PNA proxy service.
DHCP Server	The Dynamic Host Configuration Protocol (DHCP) Server enables NetProxy to automatically configure the TCP/IP protocol on each of your networked machines. This greatly reduces the complexity of configuring your network and ensures that the correct TCP/IP settings are assigned.
Port Mapping	Port mapping provides support for many applications that do not inherently support proxy servers. This includes SMTP for sending mail, NNTP for sending and reading news, IRC, ICQ and many others. NetProxy permits mapping of both TCP and UDP ports.
POP3 Gateway	The POP3 gateway provides access to e-mail stored on POP3 mail servers. NetProxy works with all popular mail programs (Eudora, Microsoft Outlook, Agent, Pegasus mail, Microsoft Exchange, etc.)
DNS Server	NetProxy's in-built DNS Server allows you to easily manage your own private namespace from a central point.
Dial on Demand	NetProxy's flexible dial-on-demand system ensures that your dialup (modem or ISDN) connection to the Internet is used effectively. You can specify the amount of time that NetProxy must remain 'idle' for before closing the connection, as well as the minimum connect period. NetProxy can even dial different Internet Service Providers at different times or days.
Firewall	The heart of NetProxy's security is a powerful rules-based firewall system. Using industry standard 'slash notation', you can fully control which services on your network (if any) can be accessed from the outside world and which computers your network users have access to. For the novice, NetProxy's easy-to-use <i>configuration wizard</i> ensures you have a secure firewall setup.
Access Logging	NetProxy provides full access logging for all network activity in standard plain text files. This allows you to monitor usage, and evaluate the performance of NetProxy's caching facilities. NetProxy's log files are stored in a format similar to CERN httpd, and can be analysed using a separate NetProxy Log Analysis Tool which is available free of charge to all registered users of NetProxy.
WWW Filter	WWW filters allow you to bar access to specific Web sites or specific areas of Web sites.
Time-based Usage Restrictions	Using NetProxy's <i>Time-based Usage Restrictions</i> , individual hosts and groups of hosts can now have their NetProxy access limited to specific times of day and days of the week.
System Service	NetProxy runs transparently as a system service under Windows NT/2000 and Windows 95/98/Me. You don't need to dedicate a machine to running NetProxy, and you don't need to log on to Windows to start NetProxy.