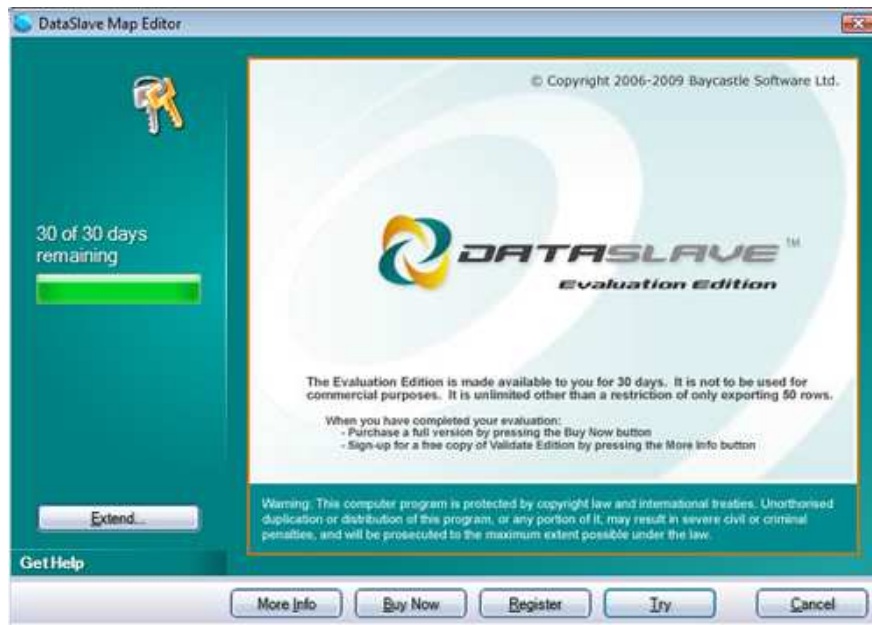


Registering your copy of DataSlave - Version 2.2 on

If you have not already done so to purchase a copy of DataSlave go to the Baycastle web site and select the DataSlave Pricing page. You can also do this from the licensing splash screen below.

Press the Add to Basket button against the product you which to purchase. You can use a credit card. You will be sent your Serial Number.



Run DataSlave. Press the Register button.



Enter your Name, Organization and the Serial Number. Press the Register button.

Registering your copy of DataSlave - Version 2.2 on

A licence activation dialog box is displayed. This activation will licence your copy of DataSlave to your PC.



You can select to:

- If your PC is connected to the Internet quickly activate on-line. DataSlave will contact our licence server to authenticate the licence. This will only be done once and no personal information is passed
- Activate manually by emailing us for a code
- Activate at a later date. There is a 15-day and 15-use grace period after which you must activate

Registering your copy of DataSlave - Version 2.2 on

If you choose to activate by email you will need to email support@baycastle.co.uk with the serial number and machine code:



- Press the Go Back key and continue without activation.
- DataSlave will run.
- You will receive your Activation Code within 2 working days.
- Once you have received this display the above dialog box by selecting Activate manually again and enter the code.
- Press Activate to complete the licence activation.

You can move your DataSlave licence by choosing the de-activate option from the Help Menu. This will allow the licence to be de-activated so that it can be re-activated on another machine.

Please note: Licences for earlier releases of DataSlave can not be used with version 2.2 onwards. You will need to contact sales@baycastle.co.uk to purchase a licence or get your free Serial Number.



Registering your copy of DataSlave

- Version 2.2 on

DataSlave Loader

If you have purchased the DataSlave Loader you will be sent a licence file. This should be placed in the DataSlave folder:

C:\Program Files\Baycastle Software Ltd\DataSlave

The first time you run DataSlave Loader please do this from the command prompt. You will be asked to activate the licence as described above for DataSlave.

You can move your Loader licence by running from the DOS prompt with the /dl switch. This will allow the licence to be de-activated so that it can be re-activated on another machine.